

Traffic & Parking Instructions

Buses

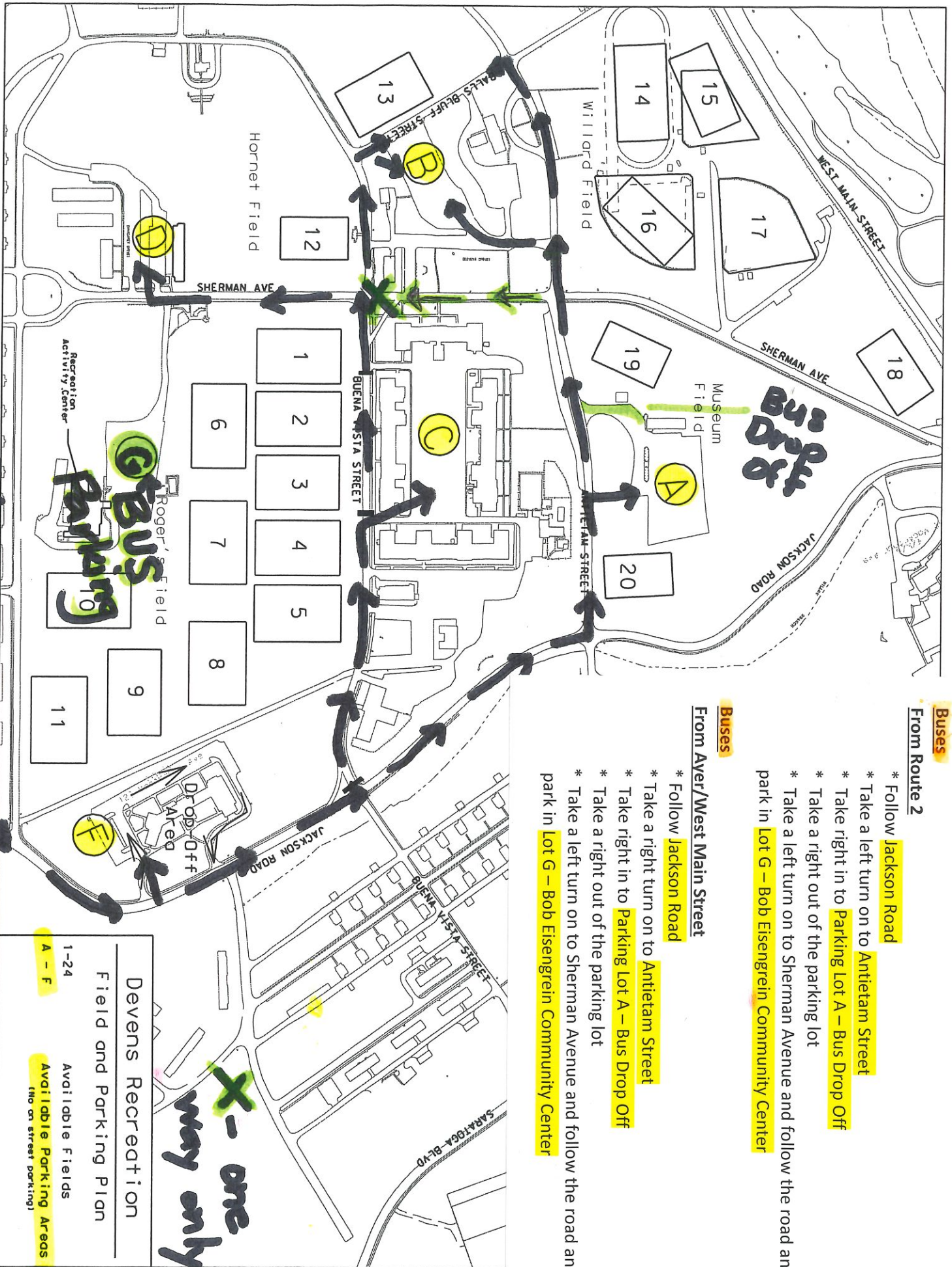
From Route 2

- * Follow Jackson Road
- * Take a left turn on to Antietam Street
- * Take right in to Parking Lot A – Bus Drop Off
- * Take a right out of the parking lot
- * Take a left turn on to Sherman Avenue and follow the road and park in Lot G – Bob Eisengrein Community Center

Buses

From Aver/West Main Street

- * Follow Jackson Road
- * Take a right turn on to Antietam Street
- * Take right in to Parking Lot A – Bus Drop Off
- * Take a right out of the parking lot
- * Take a left turn on to Sherman Avenue and follow the road and park in Lot G – Bob Eisengrein Community Center



Rt. 2 → Jackson Rd. →

Devens Recreation
Field and Parking Plan

1-24 Available Fields
A - F Available Parking Areas
(No on street parking)

X-one way only

Traffic & Parking Instructions

From Route 2

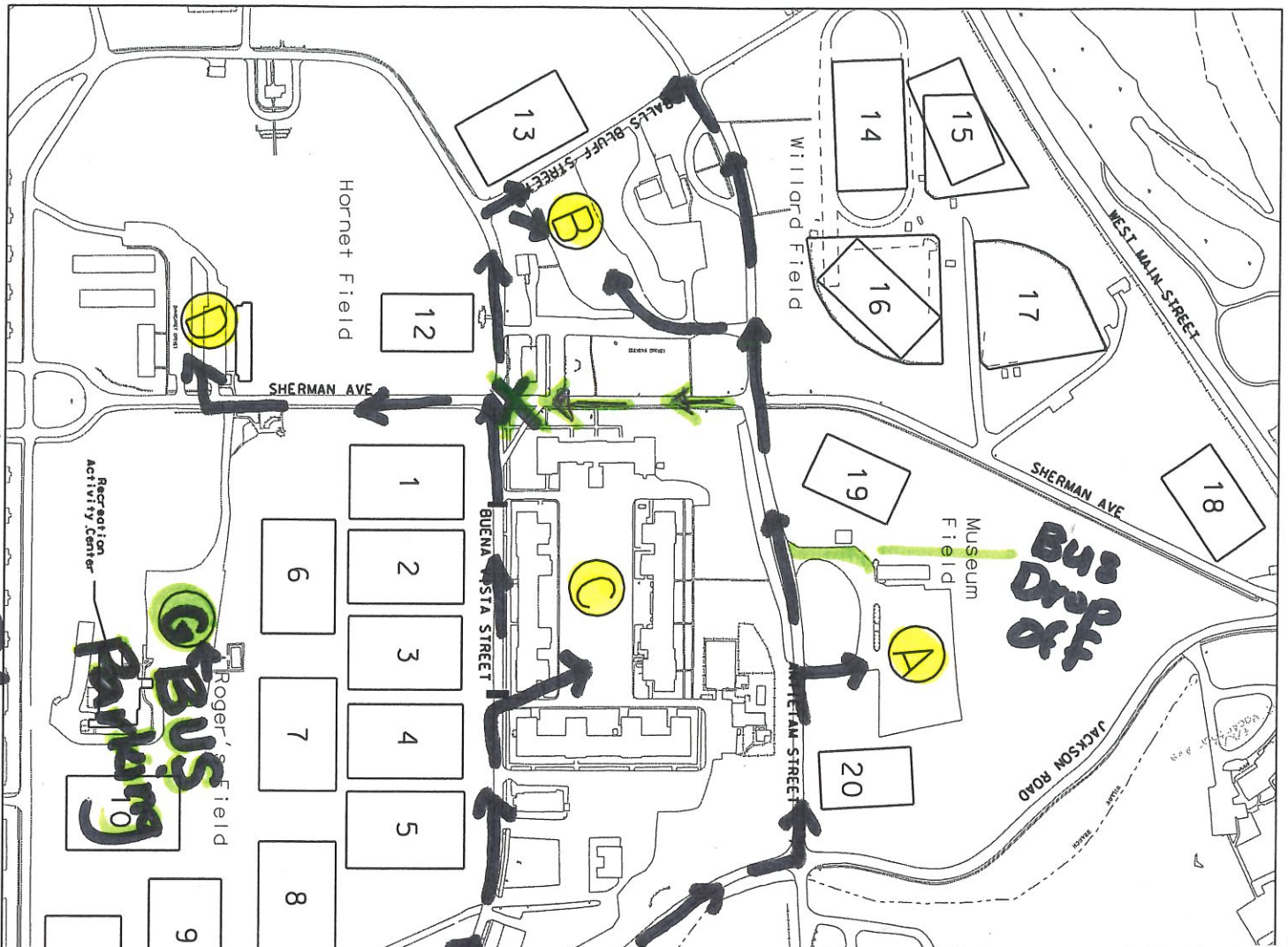
- * Follow Jackson Road
- * First lot available for parking is **Lot F** on the left hand side of Jackson Rd.
- * To access **Lot C** – take a left from Jackson Road on to Buena Vista Street and a right hand turn in to the lot.
- * To access **Lot B** – take a left on to Buena Vista Street, cross over the intersection of Sherman Ave. & Buena Vista Street. Take a right on to Balls Bluff Street. The lot will be on your right.
- * Alternate route to access **Lot B** – take a left off of Jackson Road on to Antietam St. Cross over the intersection of Antietam and Sherman. Take a left in to the back entrance to **Lot B**.
- * To access **Lot A** – take a left hand turn off of Jackson Road on to Antietam St. Take a right hand turn in to the lot.

From Ayer/West Main Street

- * To access **Lot A** – take a right hand turn off of Jackson Road on to Antietam St. Take a right hand turn in to the lot
- * To access **Lot B** – take a left off of Jackson Road on to Antietam St. Cross over the intersection of Antietam and Sherman. Take a left in to the back entrance to **Lot B**.
- * To access **Lot C** – take a left from Jackson Road on to Buena Vista Street and a right hand turn in to the lot.

Lot D is overflow parking and can be accessed from Buena Vista and Sherman Avenue.

Lot G is for bus parking only.



Rt. 2 → Jackson Rd. →

Devens Recreation
Field and Parking Plan

1-24 Available Fields

A - F Available Parking Areas (No on street parking)

X-one way only